

AnduraTex

Transform the appearance of your home and protect it from the weather with AnduraTex Thermal Efficient Coating.



Why choose AnduraTex

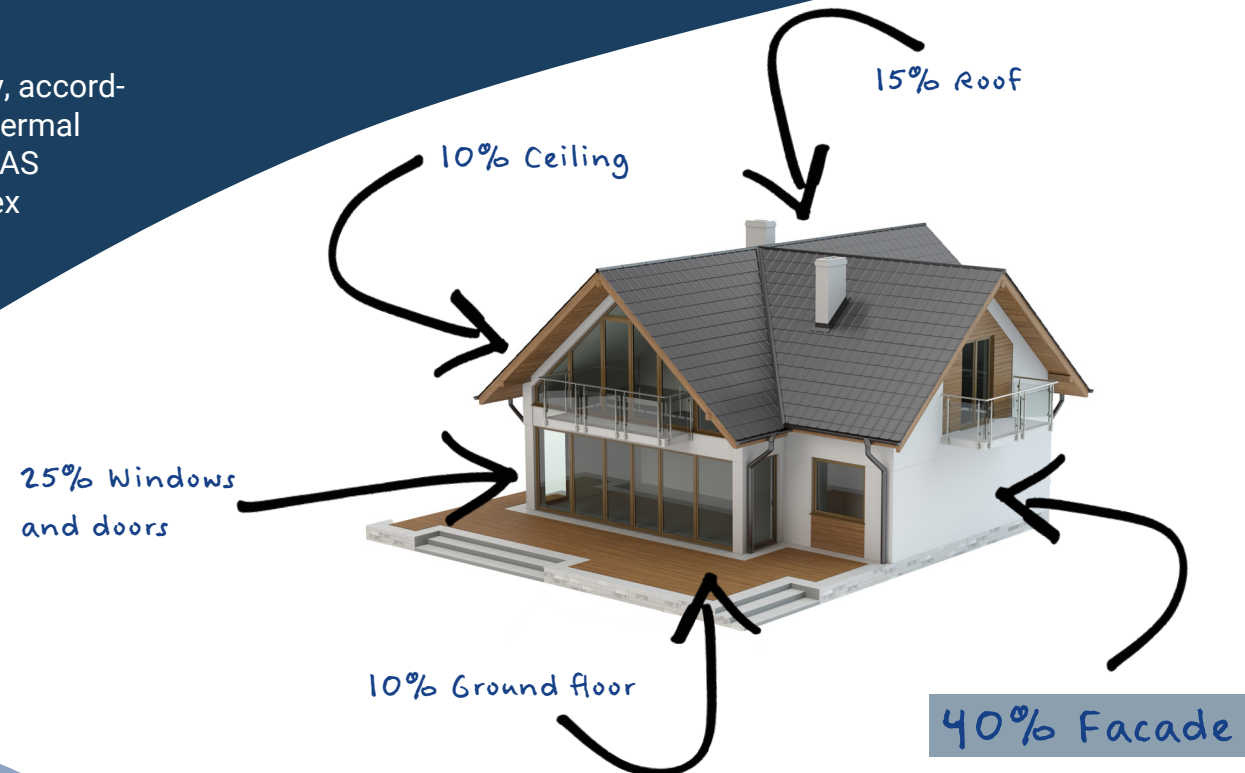
Protect and transform the appearance of your home, with advanced thermally efficient technology and over 40 years of experience.

Heating your home uses up to 55% of the energy consumed in the house. It's estimated around 40% of that energy can be lost through damp or wet walls due to lack of protection through the winter. Heat is lost through damp walls at a much higher rate than through dry walls. Conventional exterior paints may keep your walls dry to some extent, but with the innovative design and formulation of AnduraTex, it provides higher water resistance, out lasting conventional paints, thereby ensuring dry walls for years to come. By protecting your walls with AnduraTex you could save up to 30% of this heat simply by keeping your walls dry!

AnduraTex has been tested and assessed for Thermal Efficiency, according to test method ISO 8302:1991/BS EN 12664:2001, by The Thermal Measurement Laboratory, Salford University – Manchester, a UKAS approved testing laboratory. The thermal properties of AnduraTex provide an additional improvement in thermal efficiency of up to 12% in addition to the 30% saving by keeping your walls dry

AnduraTex has a manufacturer's warranty of up to 15 years, when applied in accordance with manufacturer's guidelines and installed by an Andura registered contractor.

See T's&C's for more information



High performance benefits



Specialist Application



Resists Acid Rain, Chemical Attack and Pollution



Mould Resistant



Anti Chip, Flake or Peel



Long Lasting



Thermally Efficient



Weatherproof and Microporous



Colour Stability



AnduraTex
Thermal protection system

Thermal protection system

Thermal protection system

AnduraTex in action

How it works...

(Examples of the main processes, some of which may not apply to all installations.)

STAGE
01

Preparation

All dirt, mould, algae and loose paint is removed by power-washing or other mechanical methods. Where appropriate, surfaces are treated with Andura Biocide. This is strongly recommended in areas where organic growth has been removed.



STAGE
02

Restore and Repair Work

The next stage is to repair all damaged and worn surfaces, reinstating missing masonry, brick or mortar with the appropriate materials.

Damaged render is removed and all cracks hacked out. Great care is taken towards minimising the visibility of the repair.



STAGE
03

Masking Up

Great care is taken to protect doors, windows, paths and surrounding areas including plants, bushes and lawns.

Doors and windows are masked up with tape and heavy-duty paper. Surrounding areas are protected with polythene and dust-sheets.



STAGE
04

Primer or Slushcoat

Andura's Classic Primer and Classic Slush are high performance base coats designed to be used on masonry and should be applied prior to the AnduraTex final coat.

This provides excellent adhesion for the top coat, preventing de-lamination and ensure the best weatherproofed results.



STAGE
05

Application

AnduraTex is applied to walls using specialist spray equipment, at a minimum rate of 1.2 litres to every square metre.

The result is a textured finish that helps conceal any repair work and dries to a beautiful uniform finish.

