

TMC *Trowel & Roll*

Transform the appearance of your home and protect it from the weather with TMC Trowel and Roll durable, weatherproof coating.



Why choose TMC Trowel and Roll

Protect and transform the appearance of your home, with our hassle free textured coating from manufacturers with nearly 40 years experience.

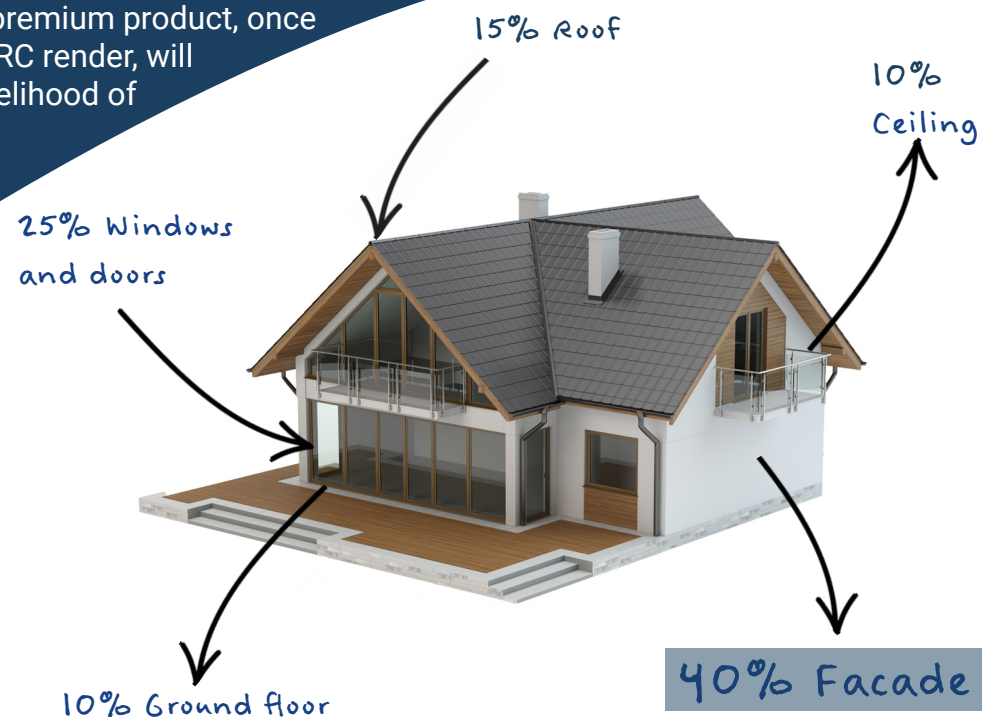
Heating your home uses up to 55% of the energy consumed in the house. It's estimated around 40% of that energy can be lost through damp or wet walls due to lack of protection through the winter. Heat is lost through damp walls at a much higher rate than through dry walls. Conventional exterior paints may keep your walls dry to some extent, but with the innovative design and formulation of TMC Trowel and Roll it provides higher water resistance, thereby ensuring dry walls for years to come. By protecting your walls with TMC Trowel and Roll you could save up to 30% of your heat supply, just by keeping your walls dry!

TMC Trowel and Roll has been specially formulated to be an easy and time efficient way to improve the appearance of your home. This high performance, textured, protective and decorative coating is applied carefully with a trowel and roll.

Its excellent durability ensures a great shield to your home. This premium product, once applied by your chosen specialist contractor and alongside the GRC render, will leave your walls beautifully blemish free whilst eliminating the likelihood of future cracking to your walls.



See T's & C's for more information



High performance benefits



Excellent Durability



Resists Acid Rain,
Chemical Attack and
Pollution



Breathable



Excellent Flexibility



All Year Application



Many Years Proof
Of Performance

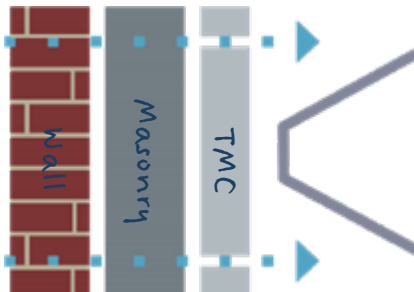


Weatherproof and
Microporous



Colour Stability

Water vapour
is able to
pass through
the wall



Water is unable
to penetrate due
to TMC Trowel
and Roll
coating



TMC Trowel and Roll in action

How it works...

(Examples of the main processes, some of which may not apply to all installations.)

STAGE

01

Preparation

All dirt, mould, algae and loose paint is removed by power-washing or other mechanical methods. Where appropriate, surfaces are treated with Andura Biocide. This is strongly recommended in areas where organic growth has been removed.



STAGE

02

Restore and Repair Work

The next stage is to repair all damaged and worn surfaces, reinstating missing masonry, brick or mortar with the appropriate materials.

Damaged render is removed and all cracks hacked out. Great care is taken towards minimising the visibility of the repair.



STAGE

03

Masking Up

Great care is taken to protect doors, windows, paths and surrounding areas including plants, bushes and lawns.

Doors and windows are masked up with tape and heavy-duty paper. Surrounding areas are protected with polythene and dust-sheets.



STAGE

04

Basecoat

On undulating surfaces, such as pebbledash, roughcast and deep exposed aggregate and brick/block work with recessed mortar joints, application of GRC render is recommended. This provides excellent adhesion for the top coat, preventing de-lamination and ensures the best weatherproofed results.



STAGE

05

Application

TMC Trowel and Roll is applied to walls by a plasterers float or trowel at a uniform minimum application rate of 1.2 – 1.5 litres per square metre. The coating shall then be laid off with a roller in a downwards direction, using a constant light pressure, taking care to achieve an evenly textured appearance.



Andura Coatings
20 Murdock Road, Bicester, Oxon OX26 4PP
01869 240374 | info@andura.co.uk | www.andura.com